

FALL 1963



WASHINGTON UNIVERSITY *Magazine*

W

U

WASHINGTON UNIVERSITY *Magazine*

W

U

FALL 1963

Editor
FRANK O'BRIEN

Assistant Editor
ROBERT ARMBRUSTER

Designer
PETER GEIST

Photographer
HERB WEITMAN

COVER: Among the many fine examples of primitive art in the University Collections is this hammered gold face mask from the Peruvian Chima culture of A.D. 1300-1500. Back cover shows the "Man-Bird," a nineteenth century wood carving from New Guinea.

Research Center	2	<i>Provost Pake reports on a major development</i>
Humanism and the New Biology	6	<i>The place of man in the biological revolution</i>
Summer Interlude	10	<i>A brief pause on a busy campus</i>
The University Collections	17	<i>A portfolio of great works of art</i>
The Discovery of NGF	29	<i>University scientists isolate a powerful nerve growth factor</i>
Charley	33	<i>WU alumni make sports headlines</i>
A Clear and Present Danger	42	<i>Arthur J. Freund on the "states' rights" amendments</i>
Tuesday's Children	46	<i>An invitation to the dance</i>

Photo Credits: Tom Stewart, pages 2, 39; all others by Herb Weitman.

THE UNIVERSITY COLLECTIONS

A UNIVERSITY CAN BE REGARDED as a storehouse of civilization's treasures. Through the years, its role has been to guard these riches, to pass them on from generation to generation, and to add to them constantly. While this wealth is essentially in the priceless but intangible coin of ideas and values, it can take concrete form also in a university's libraries, its research tools, its architecture. The Washington University Collections, a gathering of great works of art spanning the centuries, is a highly visible, most tangible part of those great treasures.

The Collections had their beginning in 1879, when the St. Louis School of Fine Arts was founded as an affiliate of the University. Before the turn of the century, such prominent St. Louisans as Halsey Ives, Wayman Crow, and Samuel Davis had contributed the works of art which formed the nucleus of a University museum. Other citizens, many of whom have chosen to remain anonymous, have followed suit in the years since, contributing both objects from their private collections and funds for the upkeep of the University Collections and for the purchase of additional works.

Today, the University Collections number about 750 outstanding works of art, including 260 paintings, 27 sculptures, 400 drawings and engravings, and representative samples of pre-Colombian art, ceramics, and Greek vases and small sculpture.

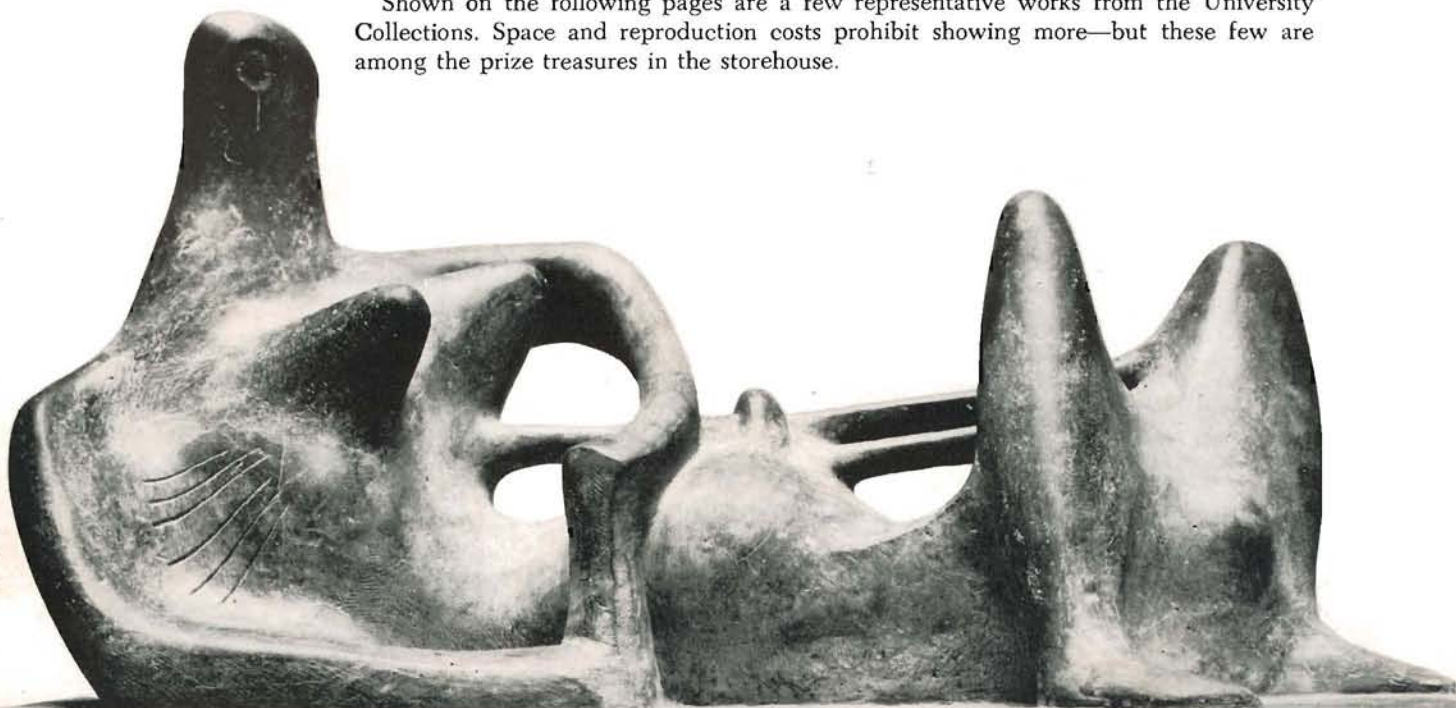
In 1959, the Collections received a permanent home and an appropriate setting in Steinberg Hall, made possible by a gift from the Steinberg Charitable Trust. Of contemporary design, Steinberg links the Fine Arts and Architecture buildings and houses galleries, an auditorium, a library, a slide room, and classrooms and offices. A recent gift has permitted enlarging the gallery space substantially.

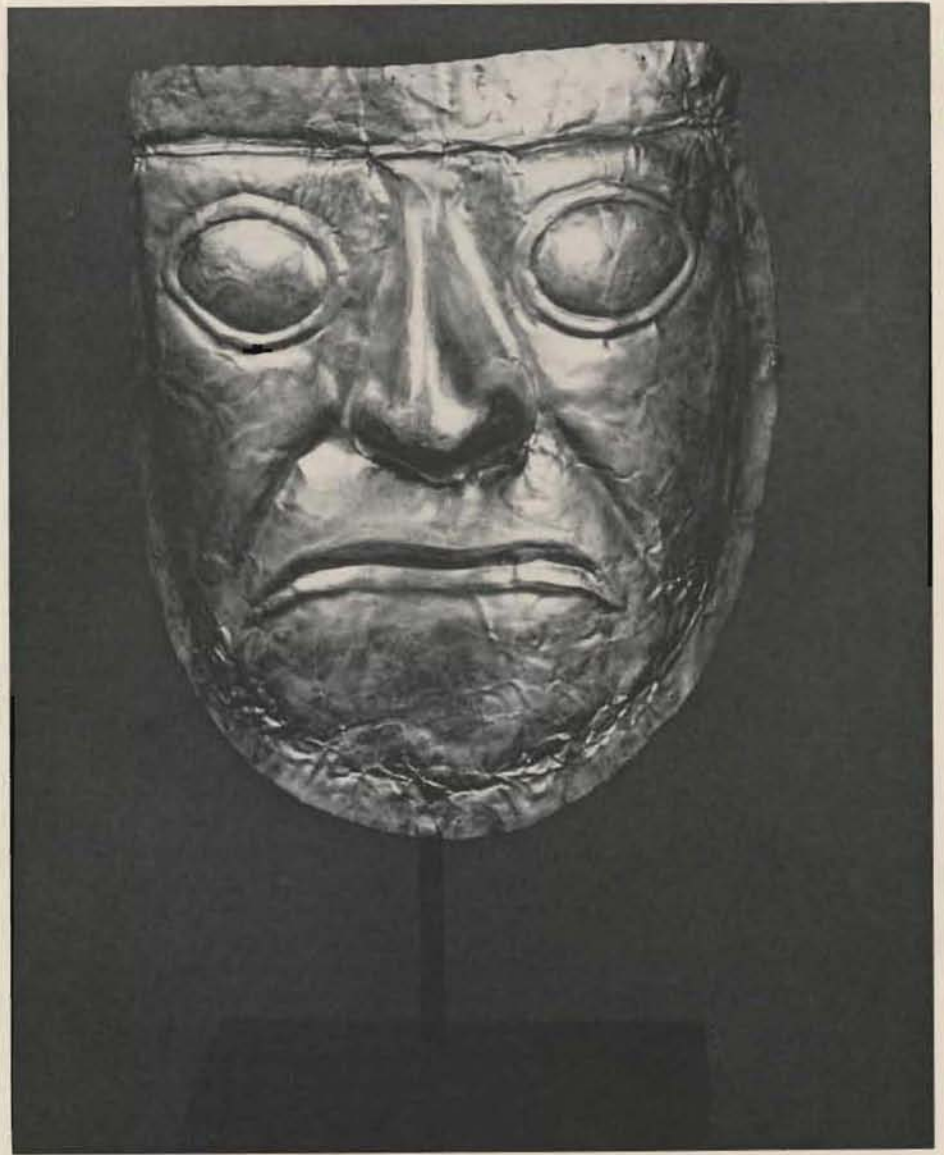
Since the Steinberg galleries opened in 1960, some twenty exhibitions have been held there, including important circulating exhibitions from the Museum of Modern Art, the Guggenheim, and other museums. Each year, special showings of both faculty and student art are held and every summer works from the Collections and from local private collectors are displayed.

When works from the Collections are not on display in the galleries or on loan to other museums, they circulate throughout the University and can be seen at Brookings Hall, Wohl Center, Olin Library, and the Olin medical residence. Temporary loans have been made in recent years to the Tate Gallery in London, the Boston Museum of Fine Arts, the National Gallery, and other museums throughout the world. Some paintings and numerous other art objects are on temporary loan to the St. Louis City Art Museum.

Shown on the following pages are a few representative works from the University Collections. Space and reproduction costs prohibit showing more—but these few are among the prize treasures in the storehouse.

Reclining Figure by
Henry Moore, 1933.





Burial Mask, Chima (Peru)
culture, A.D. 1300-1500.

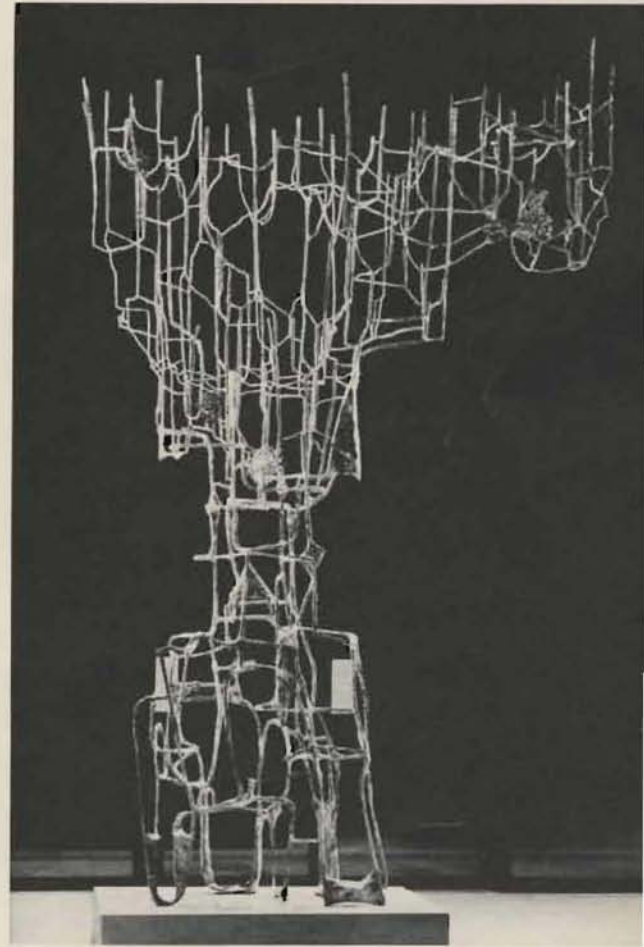


Construction by
Antoine Pevsner, 1926-27.



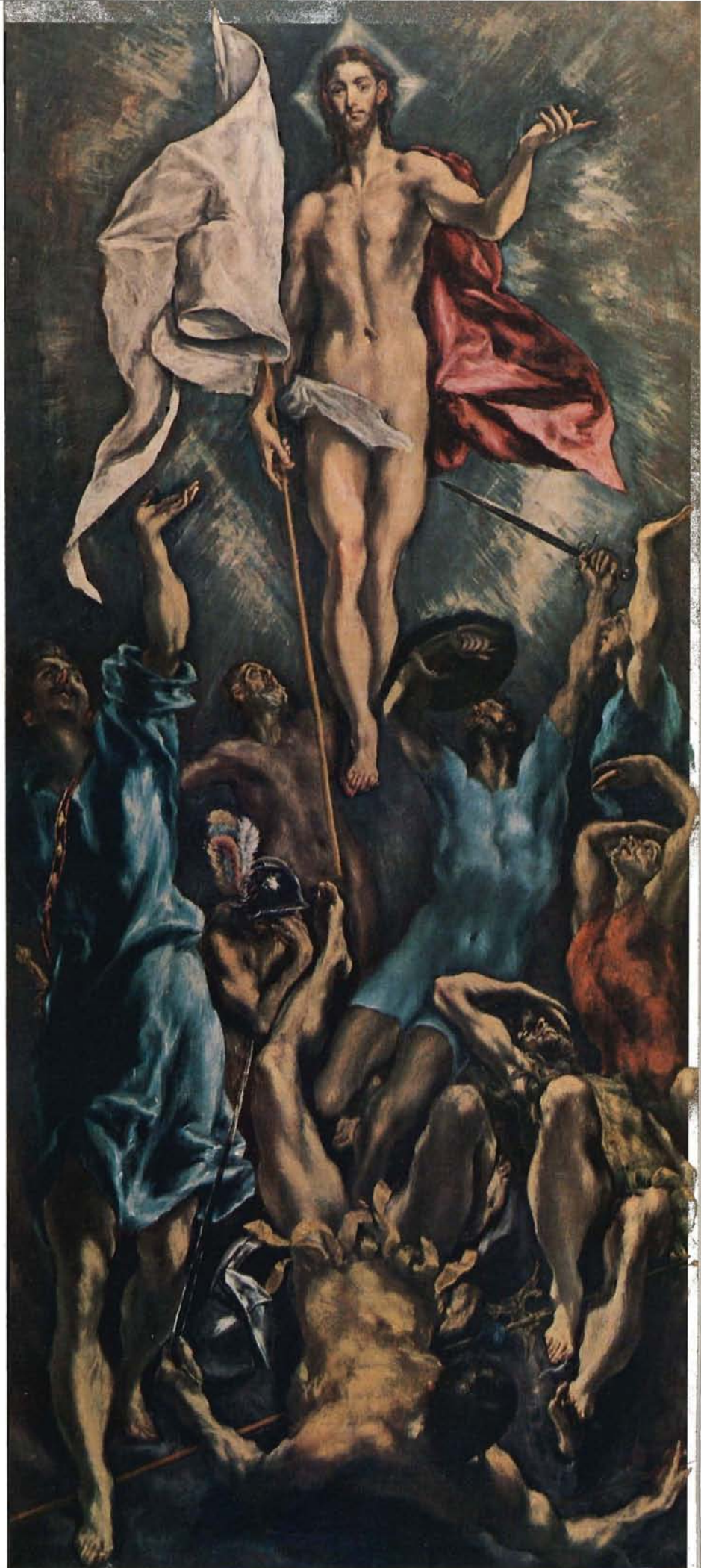
Archaeon by
Barbara Hepworth, 1960.

Presence by
Ibram Lassaw, 1960.





Bayonets Menacing a Flower,
by Alexander Calder, 1926-27.



The Resurrection
by El Greco, 1595.



The Bridge I
by Lyonel Feininger, 1913.



The Eye of Silence
by Max Ernst, 1944.



Daniel Boone Escorting a Band of Pioneers into the Western Country by George Caleb Bingham, 1851-52.



Still Life with Oysters by Georges Braque, 1937.



SUZE
APÉRITIF À LA GENTIANE

La Réunion en plein air
Les Réunionnais ont été surpris par la température qui s'est élevée à 30 degrés. Les Réunionnais ont été surpris par la température qui s'est élevée à 30 degrés. Les Réunionnais ont été surpris par la température qui s'est élevée à 30 degrés.

Le théâtre de la Réunion
Le théâtre de la Réunion a été inauguré par le gouverneur. Le théâtre de la Réunion a été inauguré par le gouverneur. Le théâtre de la Réunion a été inauguré par le gouverneur.

Le théâtre de la Réunion
Le théâtre de la Réunion a été inauguré par le gouverneur. Le théâtre de la Réunion a été inauguré par le gouverneur. Le théâtre de la Réunion a été inauguré par le gouverneur.

Le théâtre de la Réunion
Le théâtre de la Réunion a été inauguré par le gouverneur. Le théâtre de la Réunion a été inauguré par le gouverneur. Le théâtre de la Réunion a été inauguré par le gouverneur.

Le théâtre de la Réunion
Le théâtre de la Réunion a été inauguré par le gouverneur. Le théâtre de la Réunion a été inauguré par le gouverneur. Le théâtre de la Réunion a été inauguré par le gouverneur.

Le théâtre de la Réunion
Le théâtre de la Réunion a été inauguré par le gouverneur. Le théâtre de la Réunion a été inauguré par le gouverneur. Le théâtre de la Réunion a été inauguré par le gouverneur.

Le théâtre de la Réunion
Le théâtre de la Réunion a été inauguré par le gouverneur. Le théâtre de la Réunion a été inauguré par le gouverneur. Le théâtre de la Réunion a été inauguré par le gouverneur.

Le théâtre de la Réunion
Le théâtre de la Réunion a été inauguré par le gouverneur. Le théâtre de la Réunion a été inauguré par le gouverneur. Le théâtre de la Réunion a été inauguré par le gouverneur.

Les jours
Après
Le 1945, les alliés des Indes ont
Le 1945, les alliés des Indes ont
Le 1945, les alliés des Indes ont

Les jours
Après
Le 1945, les alliés des Indes ont
Le 1945, les alliés des Indes ont
Le 1945, les alliés des Indes ont

Les jours
Après
Le 1945, les alliés des Indes ont
Le 1945, les alliés des Indes ont
Le 1945, les alliés des Indes ont

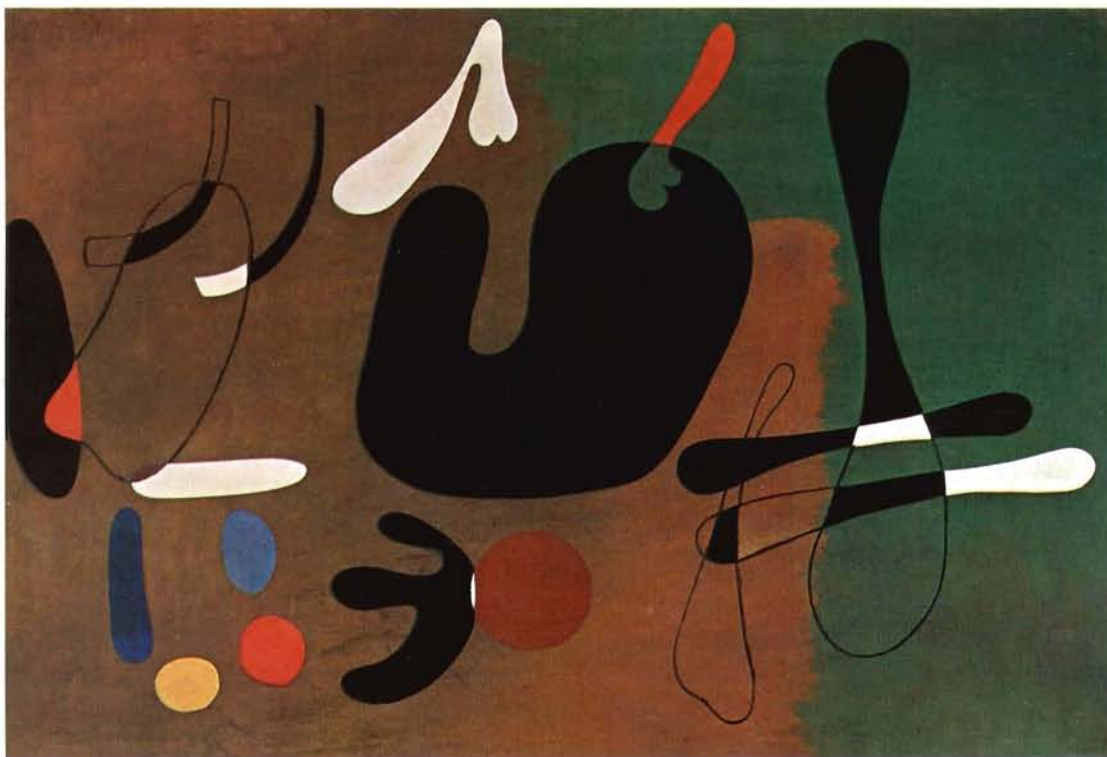
Les jours
Après
Le 1945, les alliés des Indes ont
Le 1945, les alliés des Indes ont
Le 1945, les alliés des Indes ont



Still Life with Oranges
by Henri Matisse, 1899.

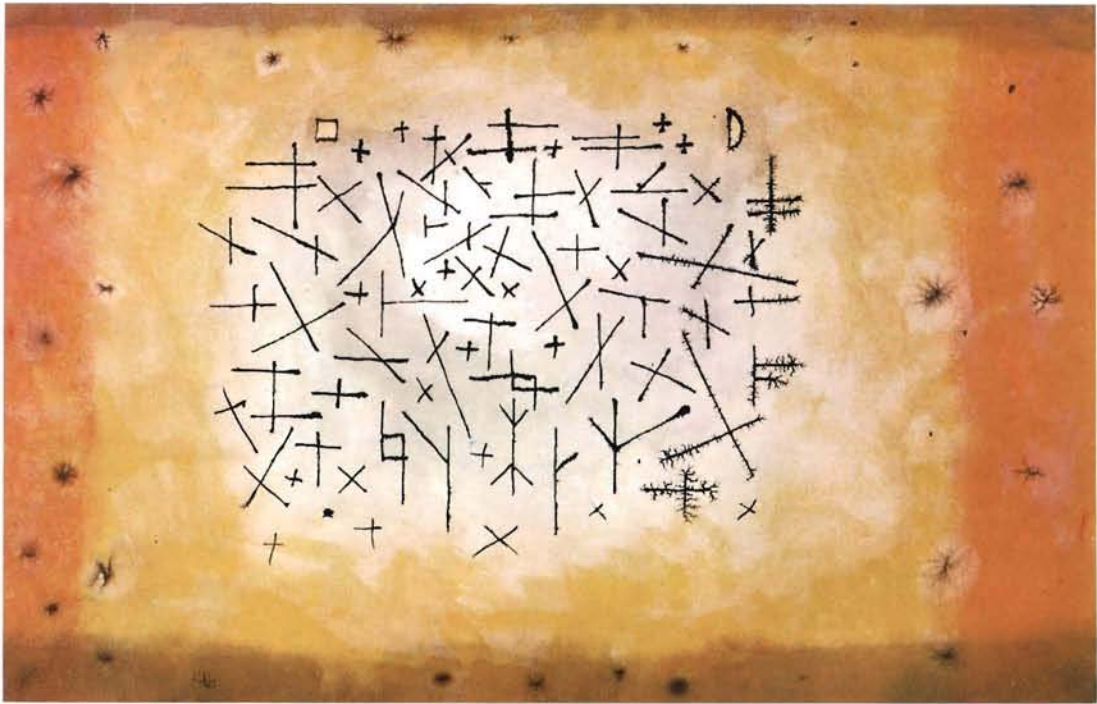


Captain Wincell
by Charles Ingham, 1827.



Composition
by Joan Miro, 1933.

Bottle of Suze
by Pablo Picasso, 1913.



Collection of Signs
by Paul Klee, 1924.



Portrait of Lord Grey and Lady West as Children
by William Hogarth, ca. 1740.



Saturday Night
by Willem de Kooning, 1956.



Still Life with Playing Cards
by Juan Gris, 1916.



Max Beckmann's *The King*, 1937, is one of many important works of art from the Morton D. May collection on extended loan to the University.

PUBLICATIONS OFFICE
WASHINGTON UNIVERSITY
ST. LOUIS, MISSOURI 63130



1963

Washington University Magazine, Fall 1963

Follow this and additional works at: http://digitalcommons.wustl.edu/ad_wumag

Recommended Citation

"Washington University Magazine, Fall 1963" 34, 1. (1963). Bernard Becker Medical Library Archives. Washington University School of Medicine, Saint Louis, Missouri.
http://digitalcommons.wustl.edu/ad_wumag/13

This Article is brought to you for free and open access by the Washington University Publications at Digital Commons@Becker. It has been accepted for inclusion in Washington University Magazine by an authorized administrator of Digital Commons@Becker. For more information, please contact engeszer@wustl.edu.